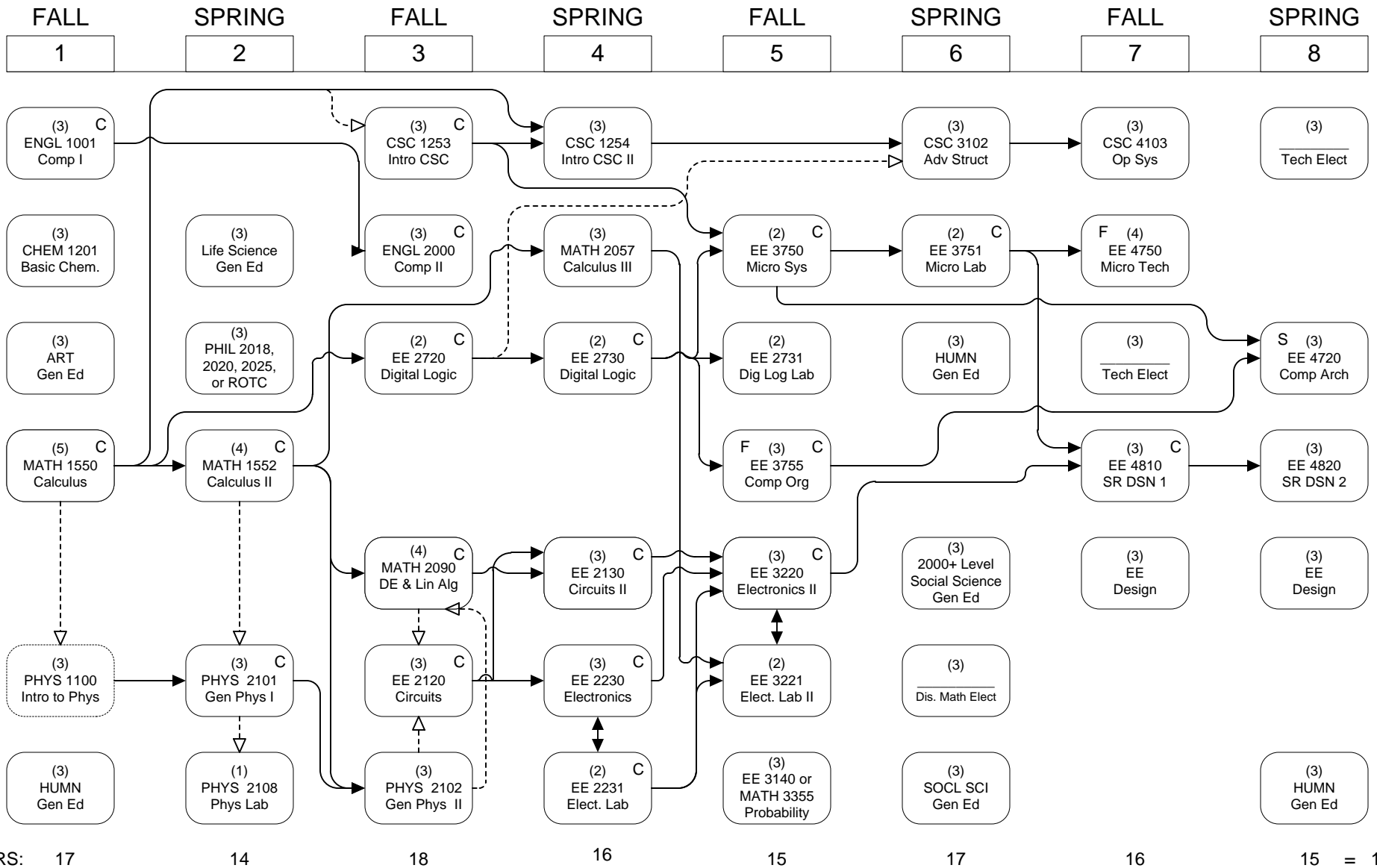
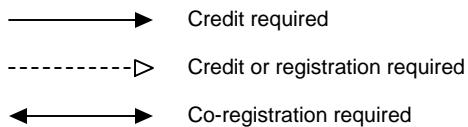


COMPUTER ENGINEERING



EEC

EEC



General Education –
See 2011-2012 General Catalog

FLOWCHART LEGEND

C Grade of "C" or better required BEFORE moving on to next course
 S Class offered in Spring semester only
 F Class offered in Fall semester only
 102 Elec Engr Bldg Computer Engineering Office

A prerequisite to any electrical engineering course is met only by obtaining a "C" or better in each course cited as a pre-requisite.